

*LightCraft*

*13.5m Fast Patrol*

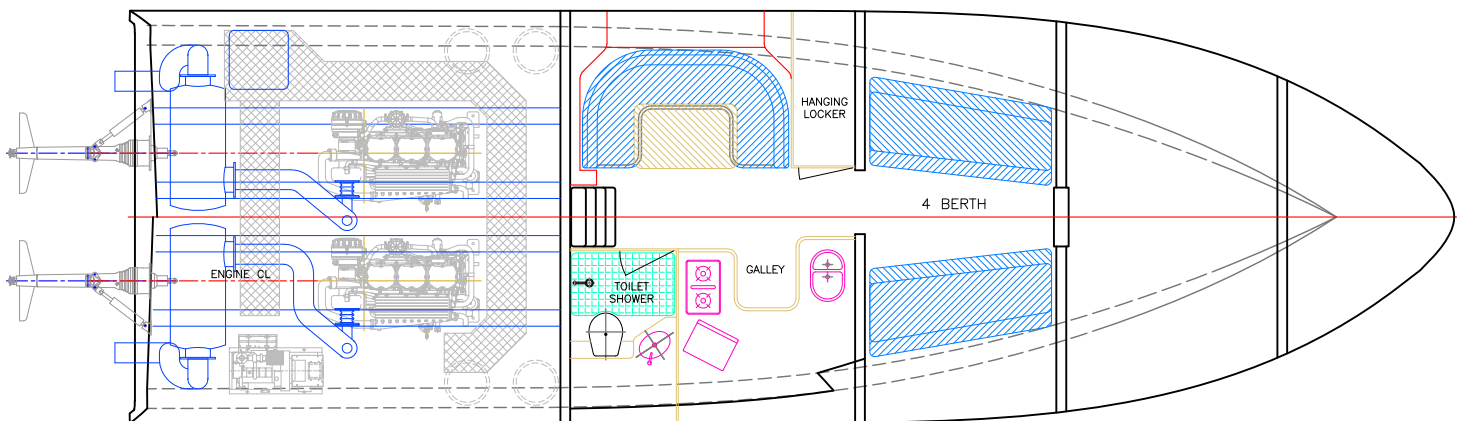
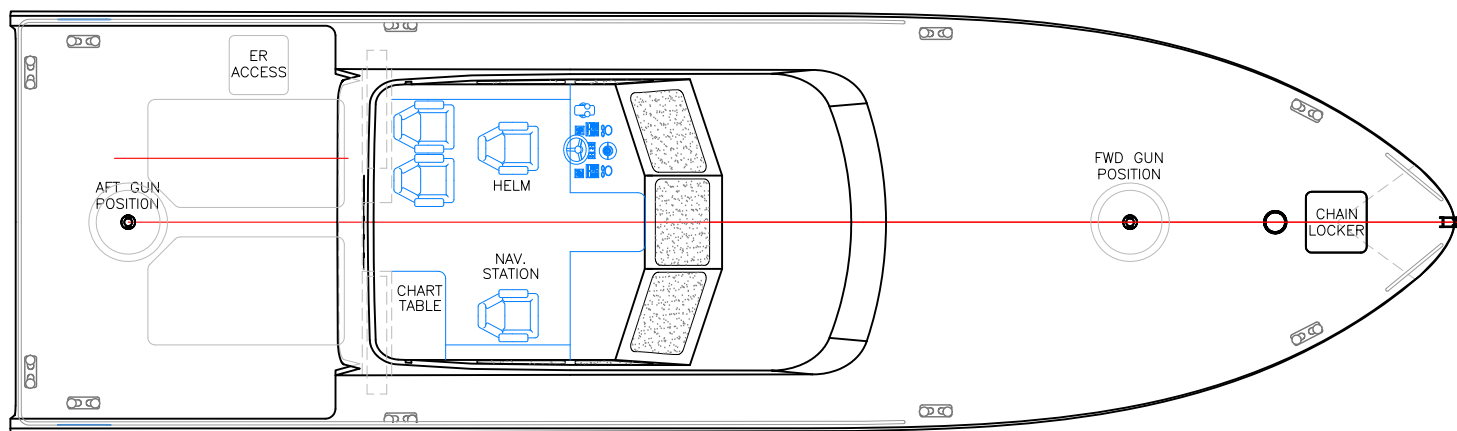
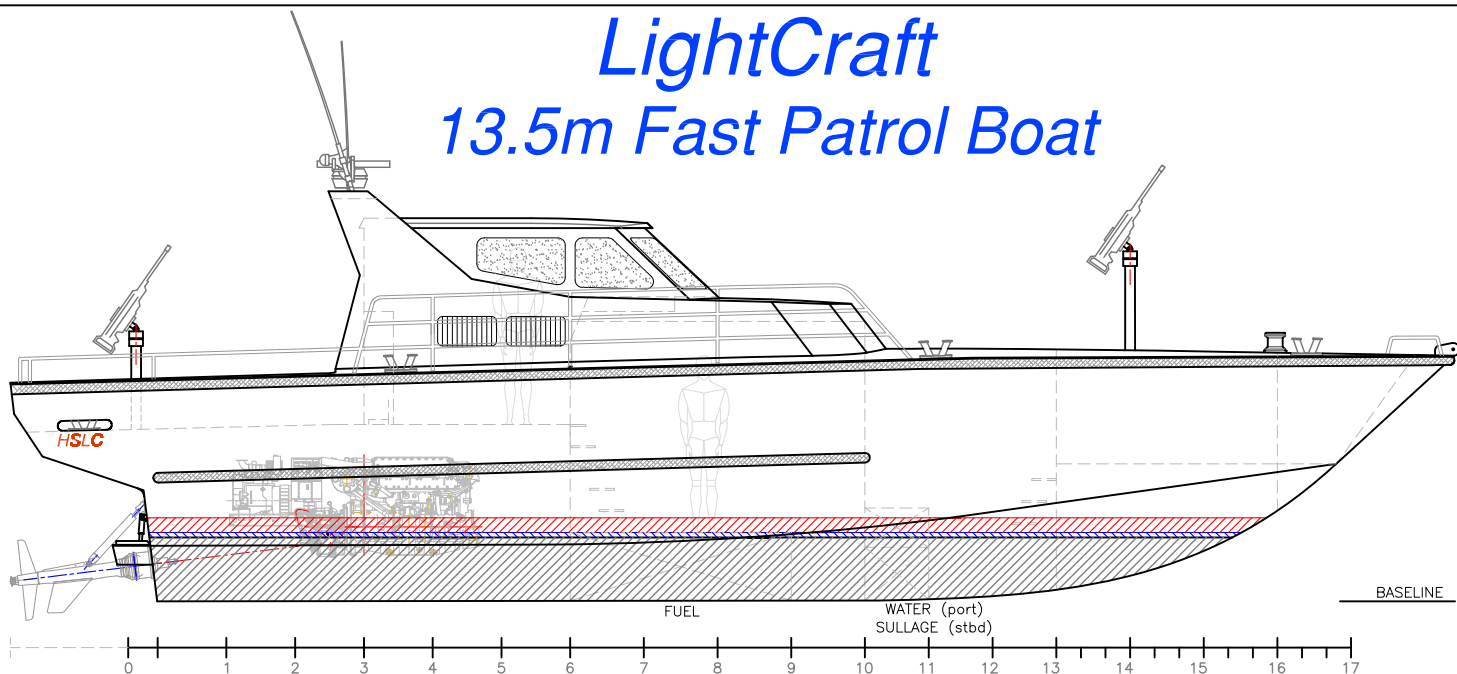


**SCY Design**

48 Sweetgum St, Ashmore Qld 4214, Australia  
Ph: (617) 5597 3521 [www.scy.net.au](http://www.scy.net.au)



# LightCraft 13.5m Fast Patrol Boat



LOA: 14.75m  
 Lmoulded: 13.5m  
 LWL: 11.2m  
 Beam: 4.2m  
 Bchine: 3.9m  
 Draft: 0.7m  
 Deadrise: 17deg.  
 Afrontal: 11.2m2

Fuel: 2400lts  
 Water: 540lts  
 Sullage: 230lts

MAIN ENGINES: 2 x CAT C12  
 522kW @ 2300rpm  
 GEARBOX: 2 x ZF 325-1A (1.733:1)  
 PROPULSION: 2 x ASD11  
 GENSET: KOHLER 11EFOZ 11kVa  
 SPEED-max: 47knots (trials displ: 14.96t, dwt 2.46t)  
 SPEED-Cruise: 35knots  
 RANGE-Cruise: 465nm

CLASS STANDARD:  
 DNV R2 PATROL  
 SURVEY: USL 2B

CONSTRUCTION:  
 MARINE GRADE ALUMINIUM

**LightCraft**  
 aluminium shipbuilding

VESSEL: 13.5m FAST PATROL CRAFT  
 TITLE: GENERAL ARRANGEMENT  
 DWG No: P13.5-100 DATE: 15/9/2005 SCALE: DRAWN: MDW

**SCY Design**  
 Consulting Naval Architects & Mechanical Engineers  
 48 Sweetgum St, Ashmore, Queensland 4214, Australia  
 Ph: 617 5597 3521 www.scy.net.au

copyright © THIS DRAWING AND THE INFORMATION CONTAINED HEREON IS SUPPLIED ON THE UNDERSTANDING THAT IT IS THE EXCLUSIVE PROPERTY OF SOUTHPORT CUSTOM YACHTS PTY. LTD. AND MUST NOT BE USED OR REPRODUCED IN WHOLE OR IN PART WITHOUT PERMISSION IN WRITING.